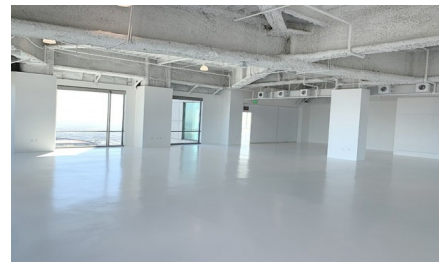
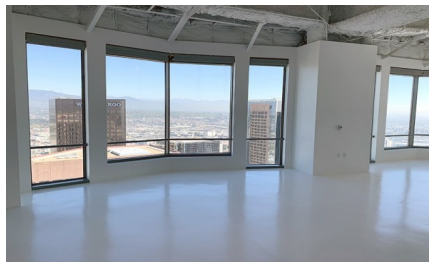
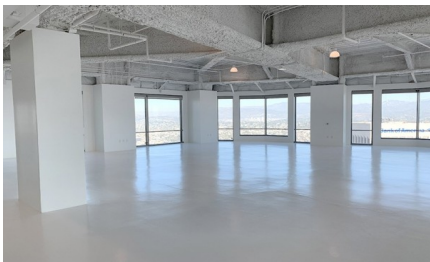
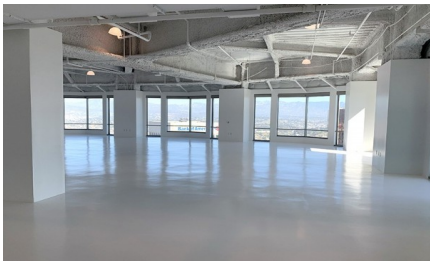
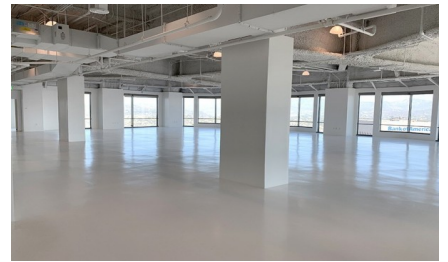
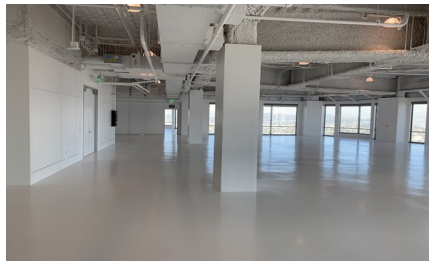
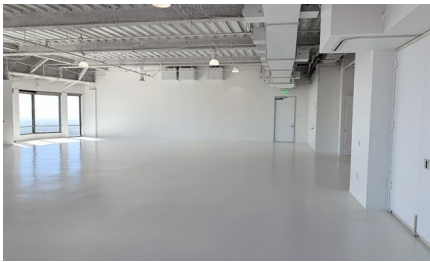
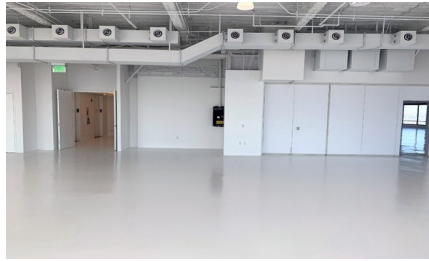
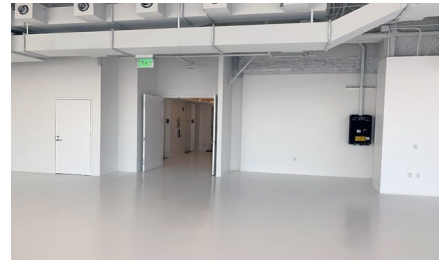
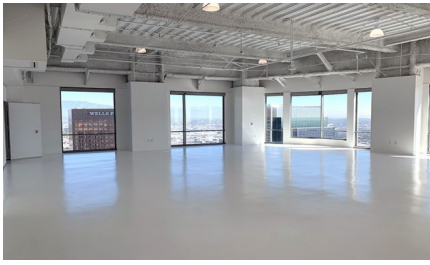


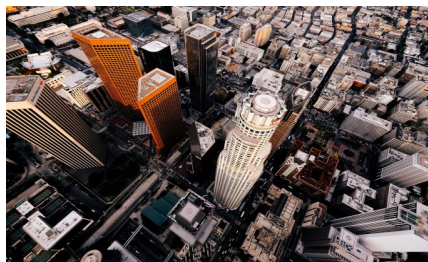
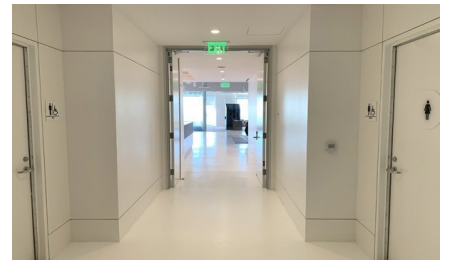
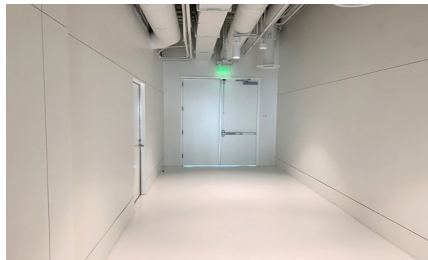
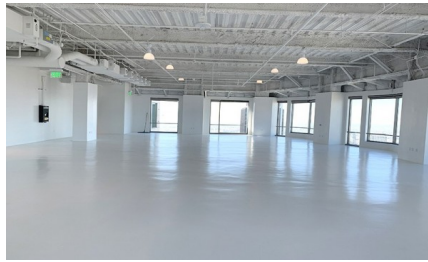
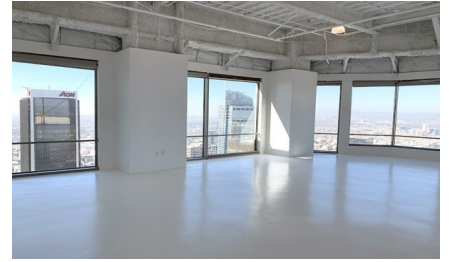
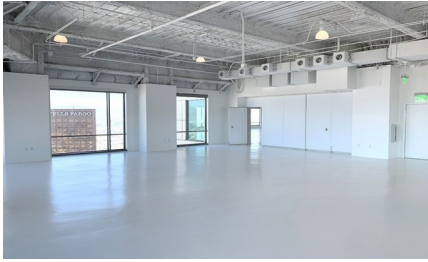
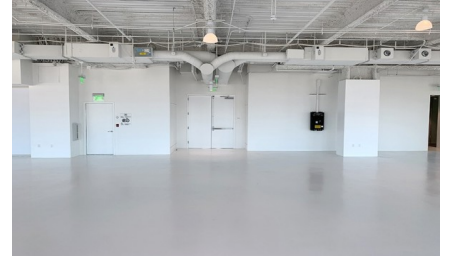
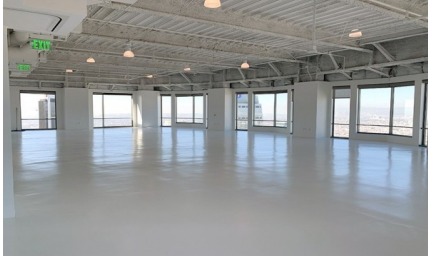
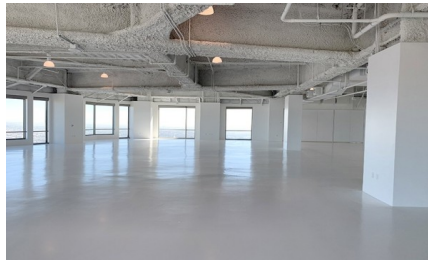
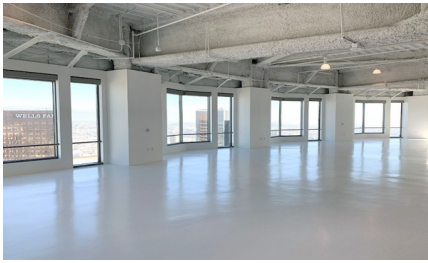
8163-LA-ALL

City - LOS ANGELES

Notes -

Zipcode - 90017





**SUMMARY**

Our North Hollywood studio will offer over 12,000 square feet of open production space. Studio A has amazing light and incredible views of the famous Hollywood sign, Hollywood hills, and downtown Studios.

**EXPANSIONS**

- Combine Studio A (3,200 sq ft) + Studio B (4,200 sq ft) for a total of 7,400 sq ft.
- Combine all Studios A + B + C (12,700 sq ft) for a total of 12,200 sq ft.

**SPECIFICATIONS**

- 12,200 square feet
- 50 ft Ceilings
- 3 Phase Power Available
- 500' of Wall Chimey Circuits
- 500' of Ceiling Chimey Circuits
- Multi-Point Professional Audio System
- Intelligent Lighting System
- Wireless microphones
- Multiple Wireless Internet Access Points for Uninterrupted WiFi Signal Strength
- Data connection points throughout entire studio allowing variable configuration systems of connectivity for audio, lighting, video & internet
- Expandable Audio, Lighting & Video Options

**FLOOR PLAN**

