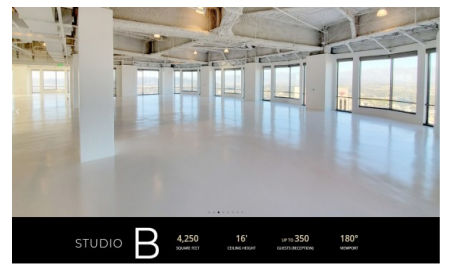
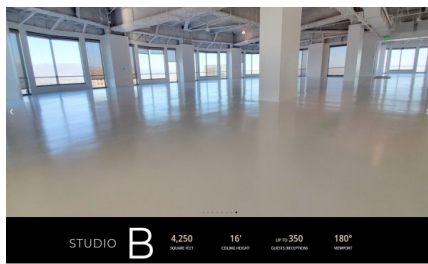
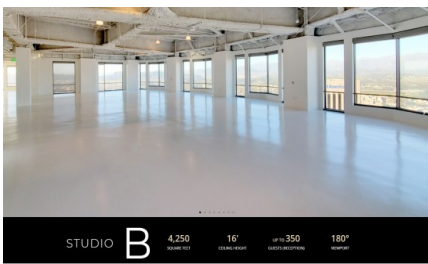
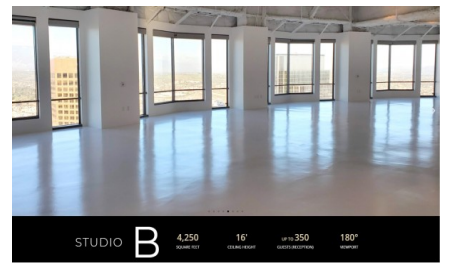
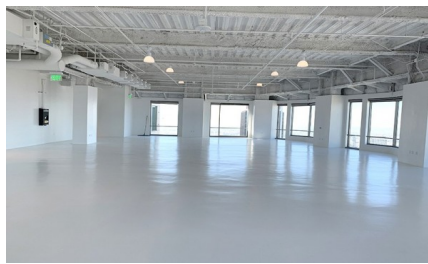
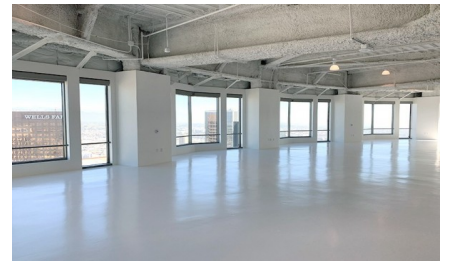
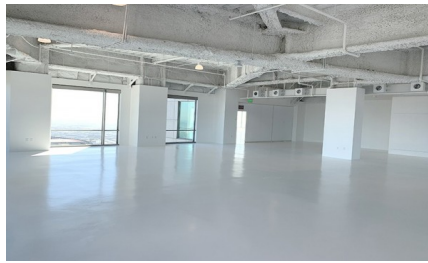
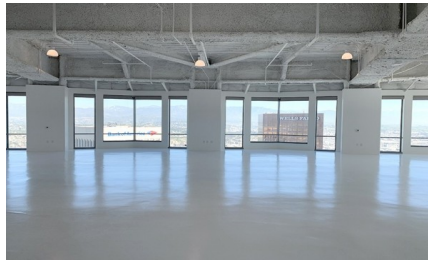
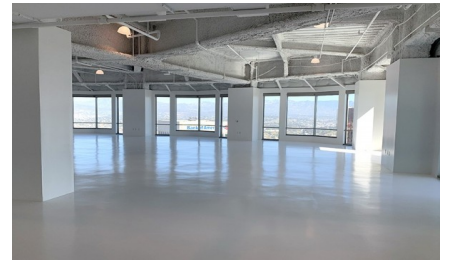
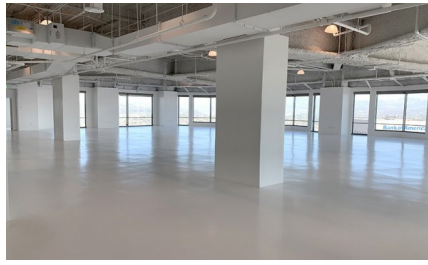
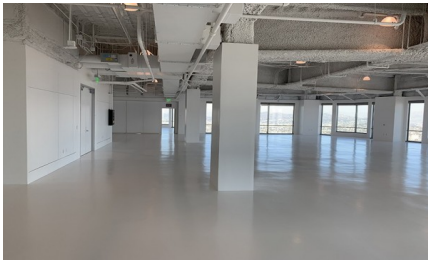


8163-LA-STUDIO B

City - LOS ANGELES

Notes -

Zipcode - 90017



SUMMARY

Our North Hollywood studio with over 3,250 square feet of open production space **Studio A** has amazing light and incredible views of the famous Hollywood hills, Hollywood Hills, and Universal Studios.

EXPANSIONS

- Combine **Studio A** (3,250 sq ft) + **Studio B** (4,250 sq ft) for a total of 7,500 sq ft.
- Combine **Studio A** + **B** + **C** (2,700 sq ft) for a total of 10,250 sq ft.

SPECIFICATIONS

- 3,250 square feet
- 16' in Ceilings
- 3 Phase Power Available
- Wall of Wall Courtesy Circuits
- 40A of Ceiling Courtesy Circuits
- Multi-Point Professional Audio System
- Intelligent lighting system
- Wireless microphones
- Multiple Wireless Internet Access Points for Chromecast and Digital Strength
- Data connection points throughout entire studio allowing variable configuration options of connectivity for audio, lighting, video & internet
- Expandable Audio, Lighting & Video Options

FLOOR PLAN