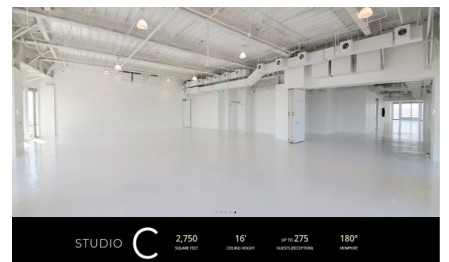
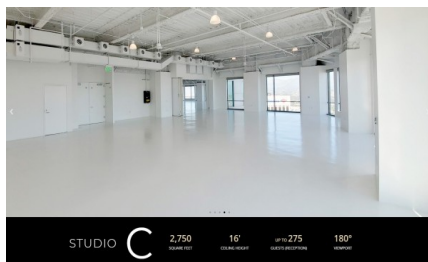
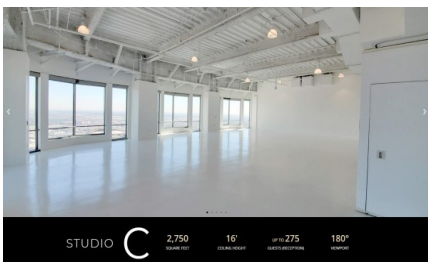
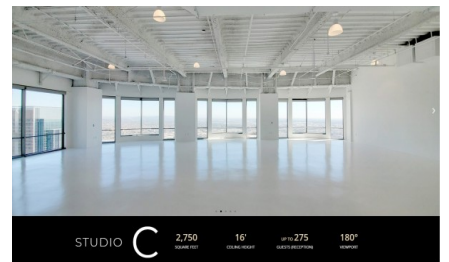
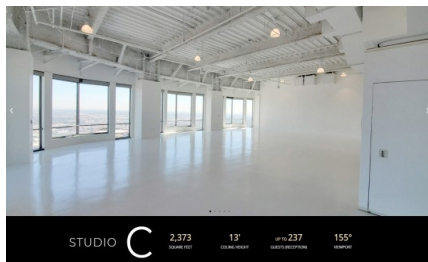
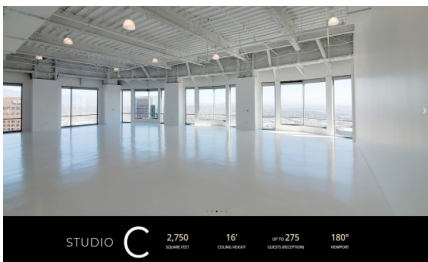
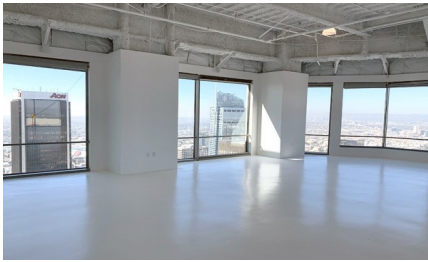
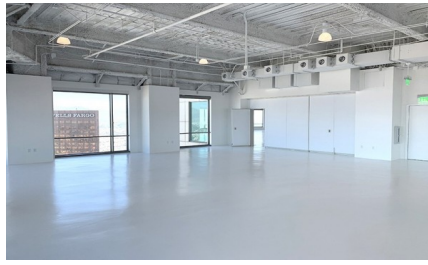
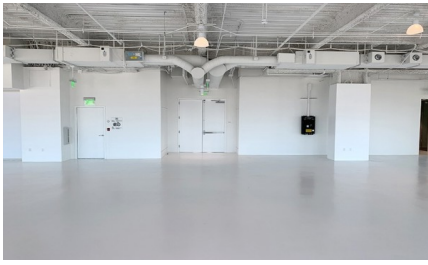


8163-LA-STUDIO C

City - LOS ANGELES

Notes -

Zipcode - 90017



SUMMARY
Our North Hollywood studio with over 3,250 square feet of open production space. Studio A has amazing light and incredible views of the famous Hollywood sign, Hollywood Hills, and Universal Studios.

EXPANSIONS

- Combine Studio A (3,250 sq ft) + Studio B (4,250 sq ft) for a total of 7,500 sq ft.
- Combine all Studio A + B + C (2,750 sq ft) for a total of 10,250 sq ft.

SPECIFICATIONS

- 3,250 square feet
- 16' in Ceiling
- 3 Phase Power Available
- Wall of Glass Courtyard (Studio)
- 40A of Ceiling Courtyard (Studio)
- Multi-Point Professional Audio System
- Intelligent lighting system
- Wireless microphones
- Multiple Wireless Internet Access Points for consistent high-speed internet
- Data connection points throughout entire studio offering various configuration options of connectivity for audio, lighting, video & internet
- Expandable Audio, Lighting & Video Options

FLOOR PLAN