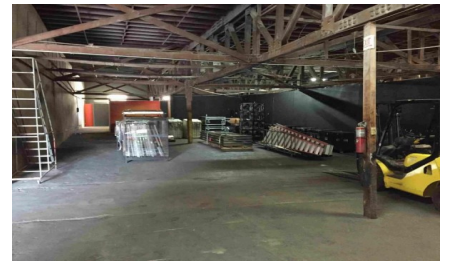
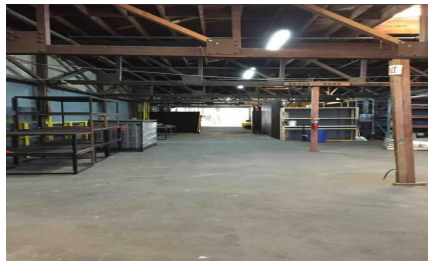
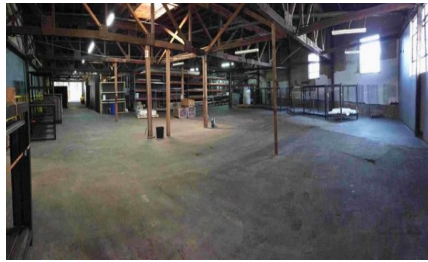
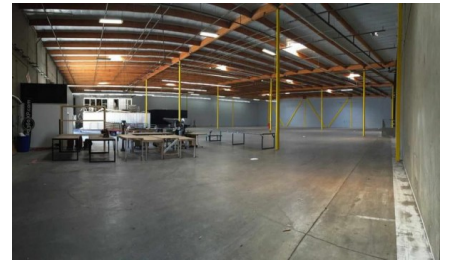
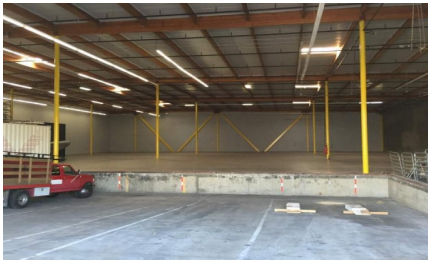


9767-LA

City - LOS ANGELES

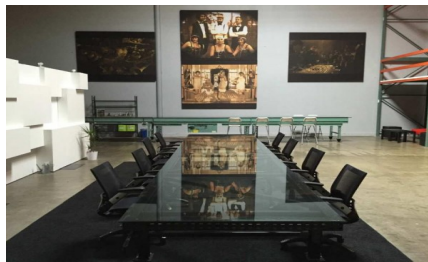
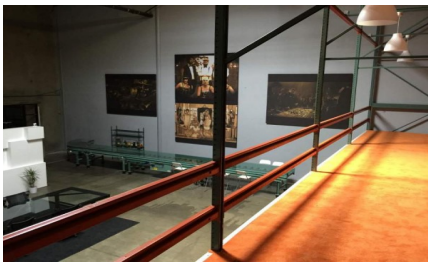
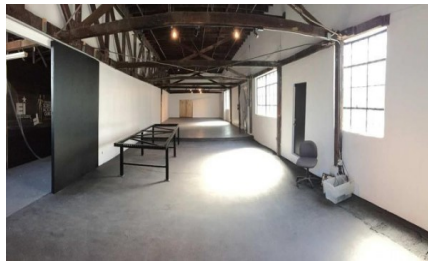
Notes -

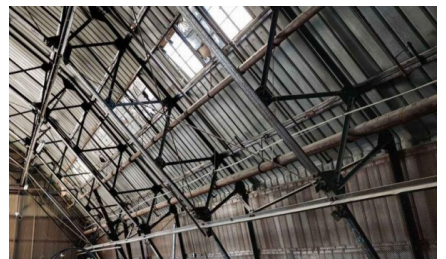
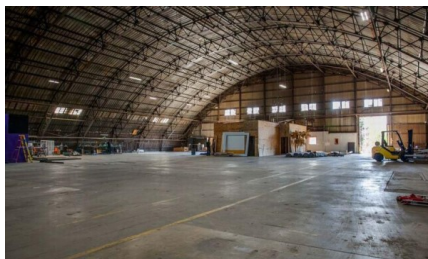
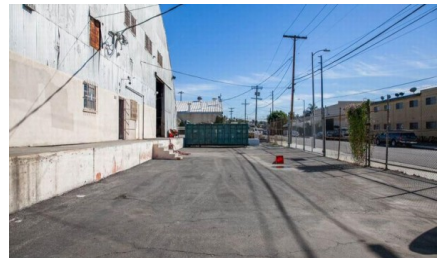
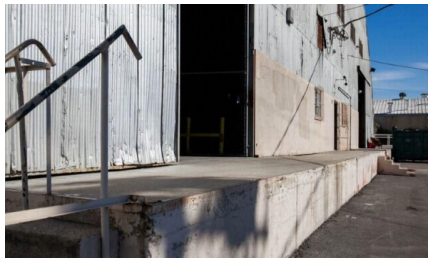
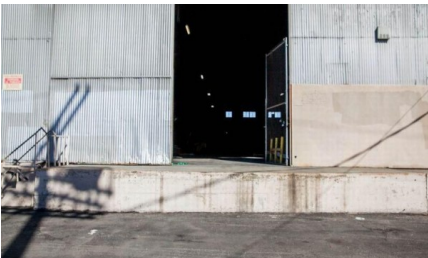
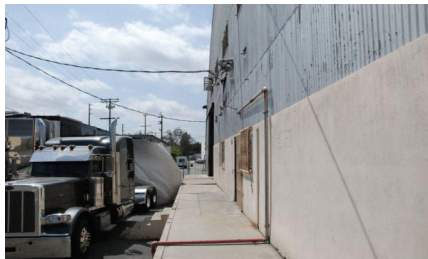
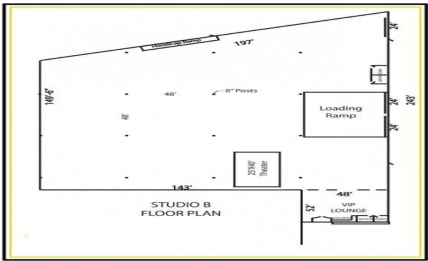
Zipcode -

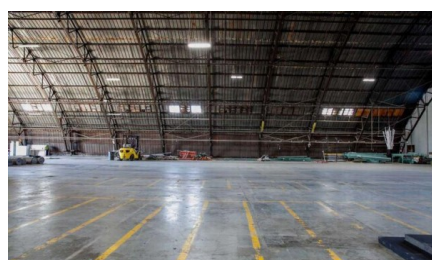
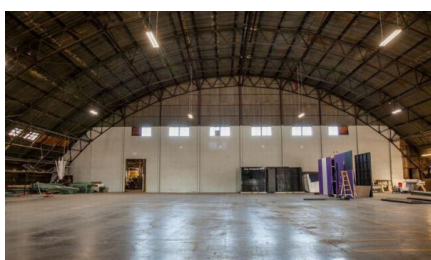
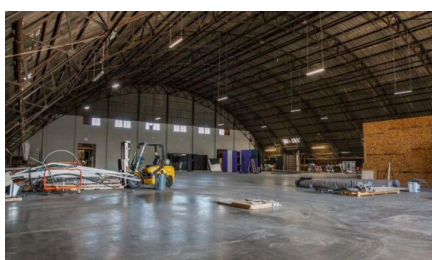
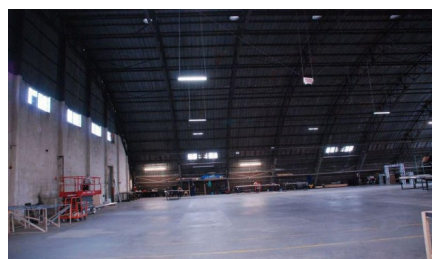
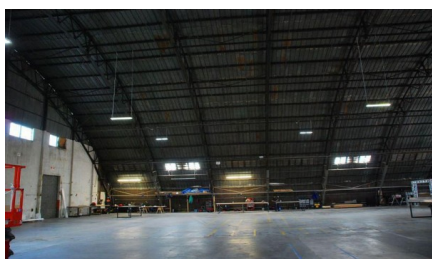
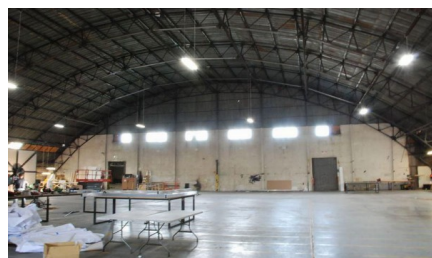
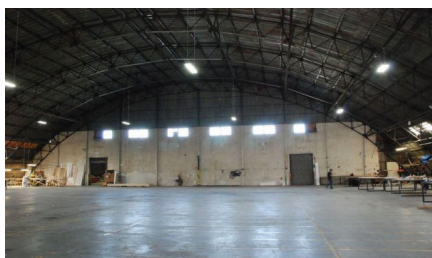
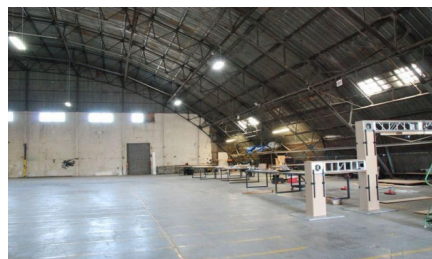
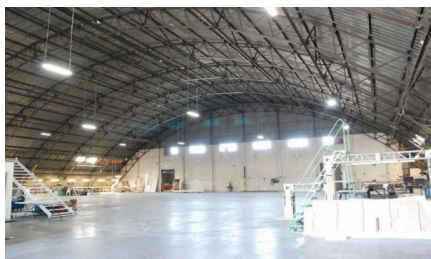
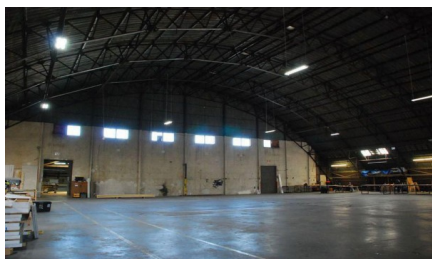
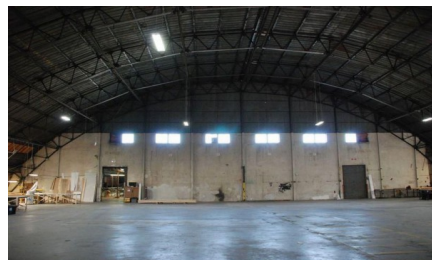
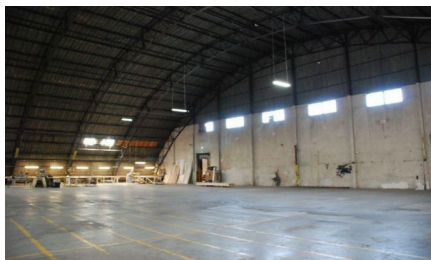
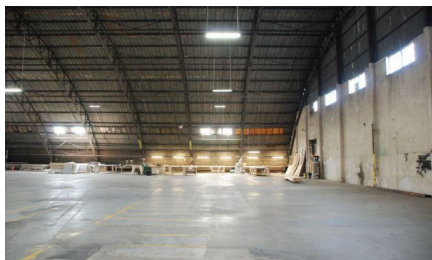
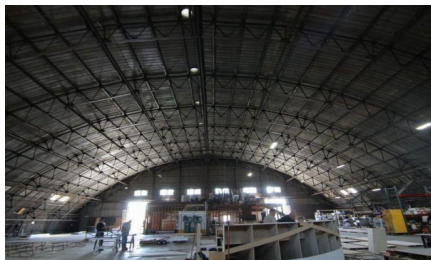
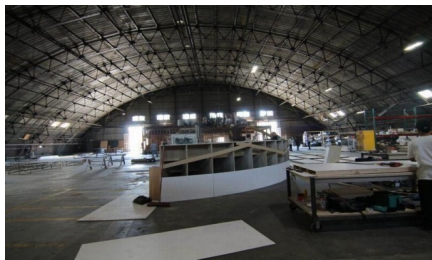
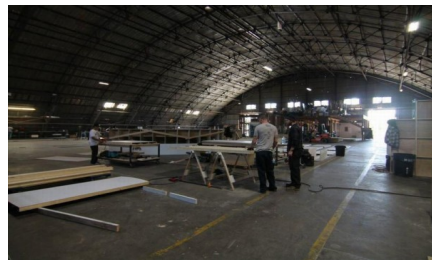
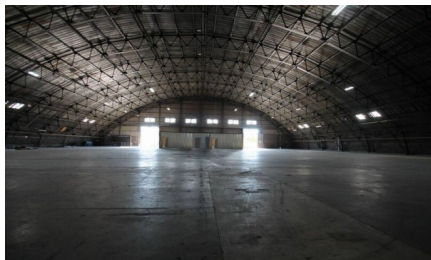
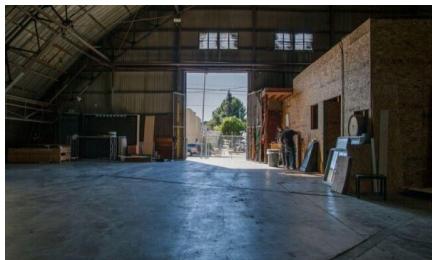


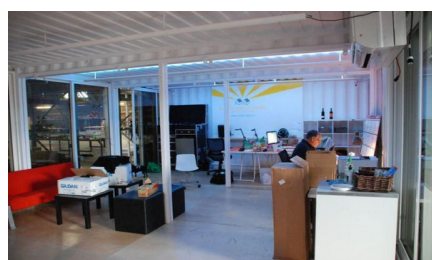
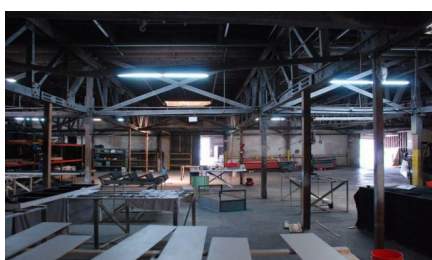
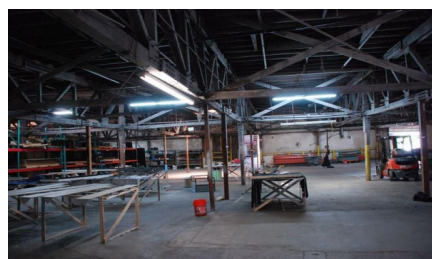
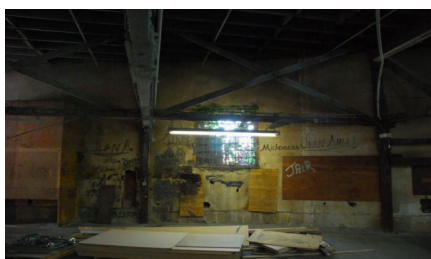
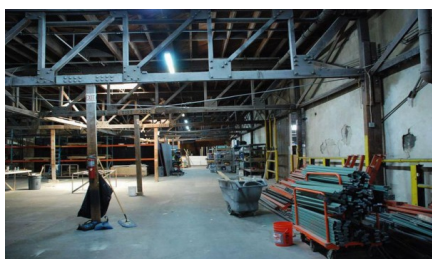
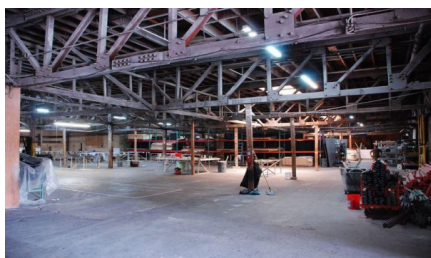
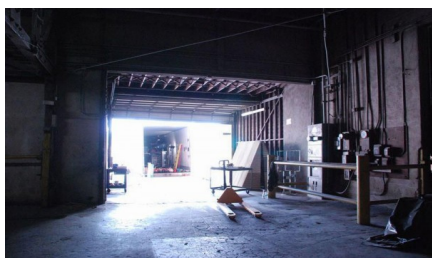
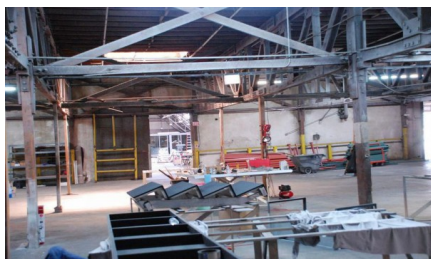
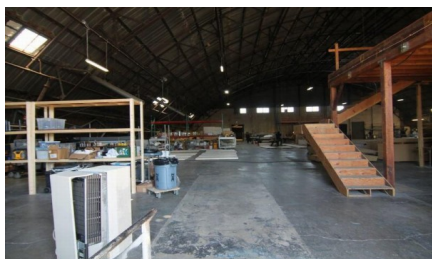
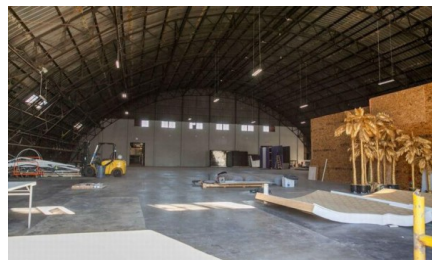
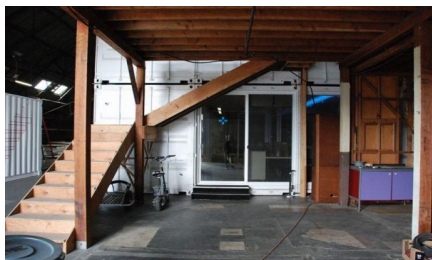
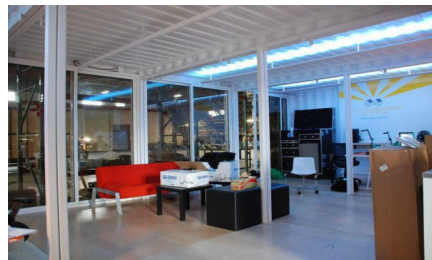
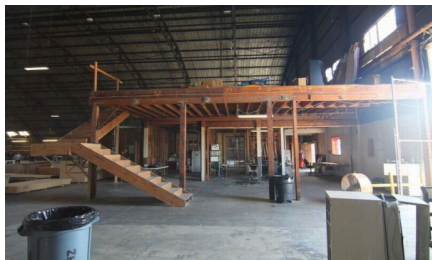
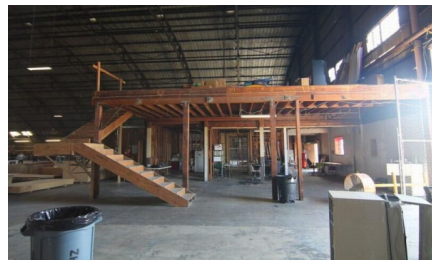
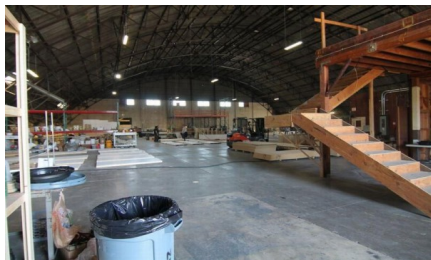
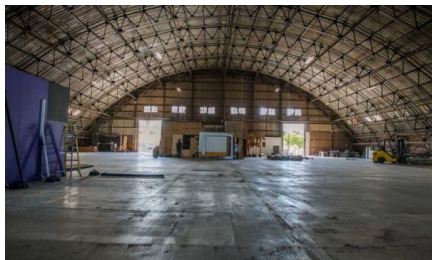
KEY INFORMATION

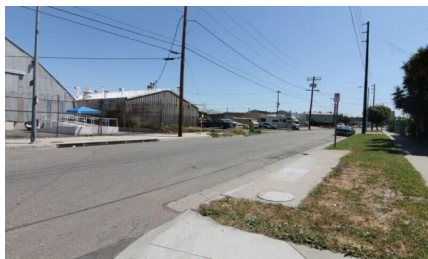
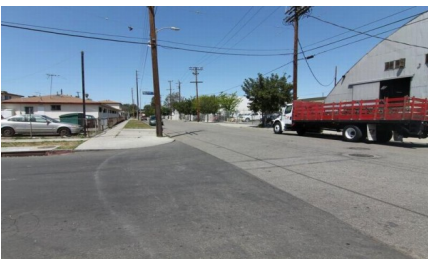
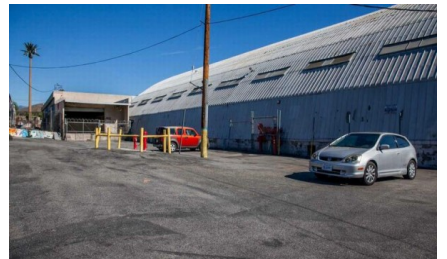
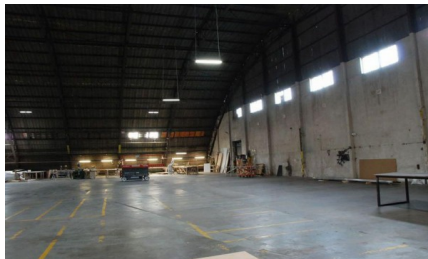
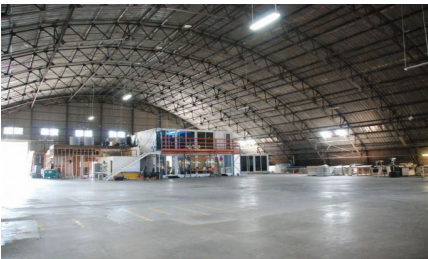
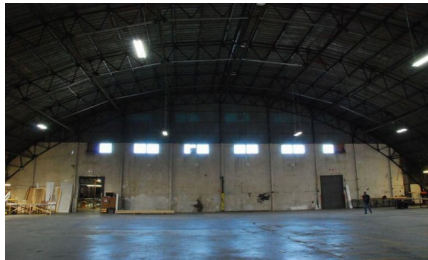
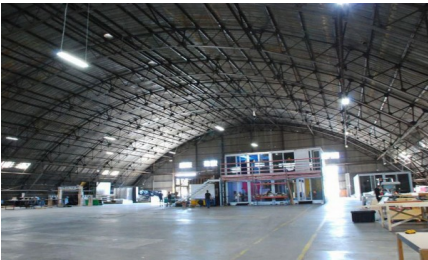
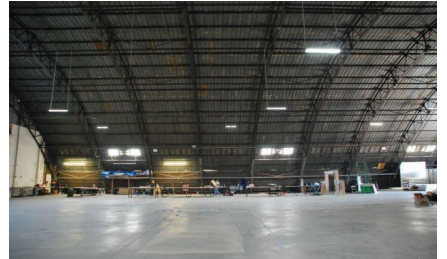
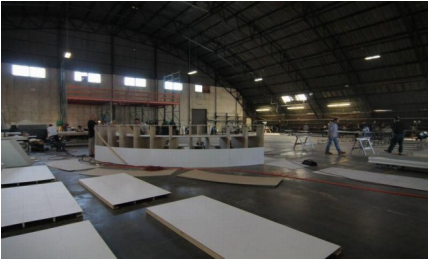
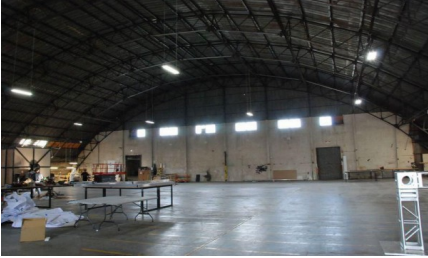
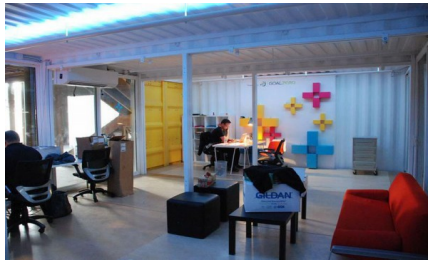
- ✓ 38,000 sq. ft. finished insulated warehouse space
- ✓ 28h clearance
- ✓ 5 loading docks (1 drive in ground floor loading dock, 2 truck bays which can hold 4 semi trucks)
- ✓ 2,400 sq. ft. Reception area (30' high ceiling with skylights)
- ✓ Kitchen/craft service area
- ✓ 300 amp 3-phase, 200 amp single-phase
- ✓ High speed internet 100/10. Up to 300/20 available for fee

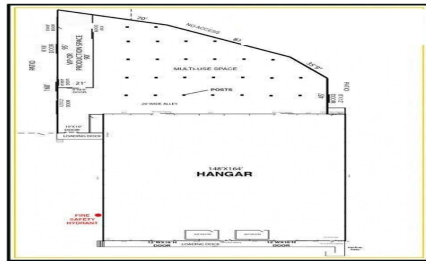
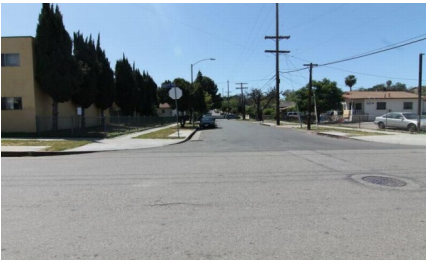












- KEY INFORMATION**
- ✓ 40,000 sq. ft. (116,000 sq. ft.) Hangar
 - ✓ 164x148 Main Hangar
 - ✓ 25,000 Open Space
 - ✓ 43' height clearance
 - ✓ 60,000 lb. rig point capabilities
 - ✓ 15,000 sq. ft. separate Back Production & Utility Space
 - ✓ 2,200 sq. ft. Production office/VIP Greenroom/Gallery area in back studio
 - ✓ 400 amp 3-phase, 200 amp single-phase power
 - ✓ 2 front loading docks, 1 back loading dock
 - ✓ 200+ car parking lot (can handle semi trucks, production trucks, crew cars)
 - ✓ In-house scenic and metal fabrication —
 - ✓ Full graphic output & installation
 - ✓ 1,700 sq. ft. private outdoor patio area
 - ✓ 2 multi-stall restrooms
 - ✓ High speed internet: 100/10. Up to 300/20 available for fee
 - ✓ AC available